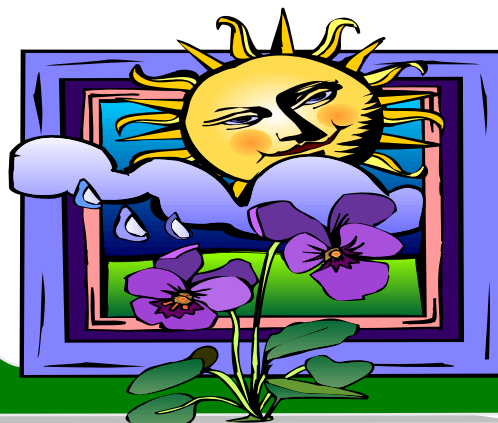


# Timely Turf Tips May 2006



If you haven't yet put down your crabgrass prevention, **there is still time!** You will still gain season-long control *and kill sprouted crabgrass* if you apply our crabgrass control **with Dimension**. If needed, spot spraying with a contact killer in June through mid-July can rid your lawn of lingering crabgrass and/or other broadleaf weeds. Since **the best weed control is gained through a solid, well-timed fertilizer** program, we carry a full line of effective fertilizers and **Weed & Feed** products. We strongly recommend consulting the **Hugo Feed Mill** for the correct application rate and timing for your individual lawn. **Timing** is a crucial element for **ensuring a better response** to your yard's particular conditions. The early on-set of warm weather conditions this year caused many people to deviate from a timely sequence of lawn maintenance projects. For instance, dethatching, power raking and plug aerating before you've mown at least twice is **hard on your lawn** because it hasn't fully recovered and come out of its winter dormancy. In addition, if you do these things after applying crabgrass control, you **can open up zones allowing crabgrass to re-establish itself**.

Most weeds have the ability to persist under poor conditions and repeated habitat disturbance, "waiting in the wings" so to speak for their opportunity to move back into your lawn. **Weed Free Zone**, or its concentrated form, **Speed Zone** are among the products we carry to effectively combat **clover** and other tough weeds such as **creeping charlie**, **poison ivy** and **thistle**. An added advantage is that it becomes rainfast within 3 hours of application and also **allows for reseeding within 2 weeks of application** – an important attribute for those of you planning to seed/spot seed this spring. Because these and many of our other herbicide products such as **Killzall** (similar to Roundup) are "**contact killers**" *they will kill the plants they come in contact with* which could include your grass. This, among other reasons is why **it's extremely important to read and follow all label directions, know the square footage** of the area in question and take **weather conditions into consideration** when applying chemicals. You don't want to end up with dead, brown grass due to over spray and/or over application.

To green up and strengthen your lawn against weeds Hugo Feed Mill recommends our 25-0-15 fertilizer. Formulated with a **higher percentage of slow-release nitrogen** (40% instead of 35), it will maintain its effectiveness farther into the season. Also, because it's made with "sulfate of potash" rather than "muriate of potash", the lower salt content is easier on your lawn. For newly seeded or sodded lawns we recommend our 8-10-20 fertilizer, which formerly had *no* slow-release nitrogen and now *contains 50 percent*. Whether your planning a new lawn or tending an established one, it's a **great time to take soil test**. **Hugo Feed Mill** can help you determine which nutrients your soil is lacking to garner the best results with your personal lawn program. In addition, current Fertilizer Laws in Minnesota require that a *soil test determine* the need for phosphorous-containing fertilizer if you're planning to use it on an existing lawn.

Whether it's lawn or landscaping projects you are planning **Hugo Feed Mill** can help you lay the groundwork for a successful project with the right prep work and quality products. For example, choosing "deer-resistant" plants for gardens or landscaping can save you a lot of frustration later on. We also carry a Root Stimulator from **Ferti•Lome** that works well with shrubs and perennials. For optimum yield from your vegetable garden, don't forget to side-dress plants such as sweet corn, peppers, tomatoes or vine crops with nitrogen. We have lots of other gardening and turf tips to

share with you – **call us (651-429-3361), stop in or email ([hugofeed@comcast.net](mailto:hugofeed@comcast.net))** us for all your lawn and landscaping needs! We hope to be able to answer your questions in a timely manner, but please bear with us at busy time of year. You may need to leave a voicemail message for **Steve Marier** with phone numbers where you can be reached at various times of the day. Thank you for your patience and your continued patronage of the **HUGO FEED MILL!**

## **Timely Turf Tip:**

**Weed Free Zone & Speed Zone** can provide effective weed control for your turf. Apply when temps are between 55-85 degrees and don't spray right after mowing or when weeds are under stress.

**\$1.00 OFF**



**40# Bag  
Hugo Feed  
Mill Brand  
25-0-15  
Fertilizer**

(Limit 4 Bags) Expires 6/18/06